

Article

## **RYOANJI: 'Existenzminimum' between Rationalization and Political Project, from CIAM to Today**

Annex

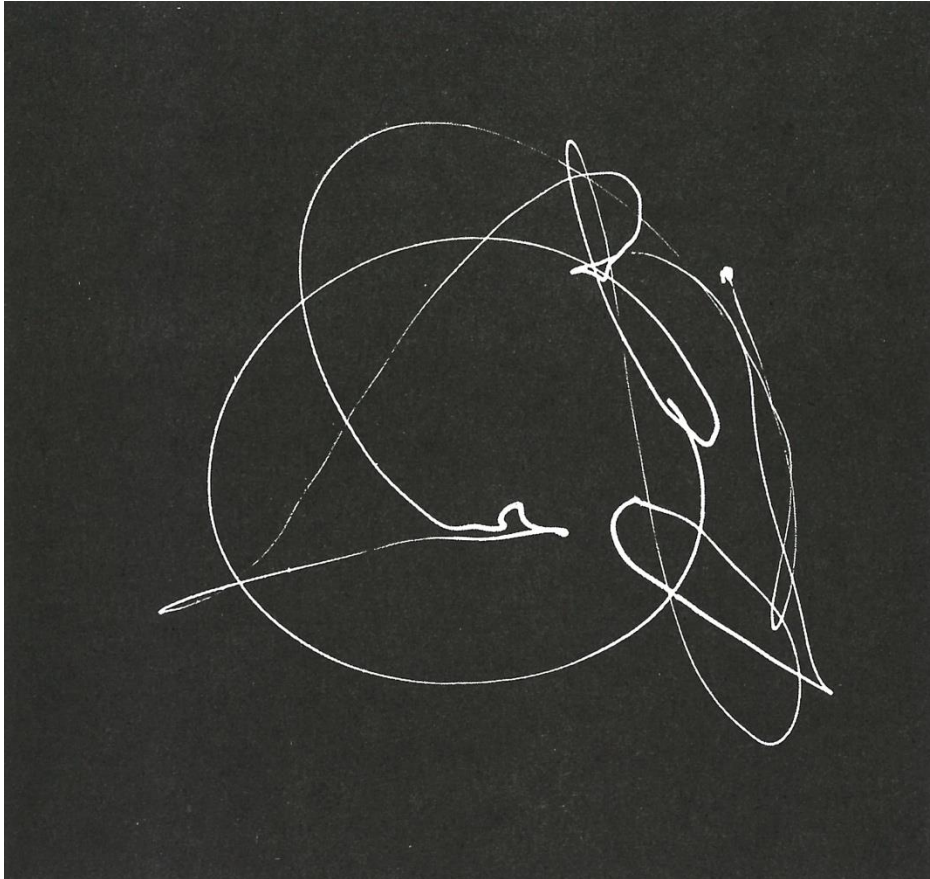


Figure 1: Frank Gilbreth, Cyclograph record of the path of a point of a rapier used by an expert fencer. Published in Siegfried Giedion, *'Mechanization Takes Command'*, 1948

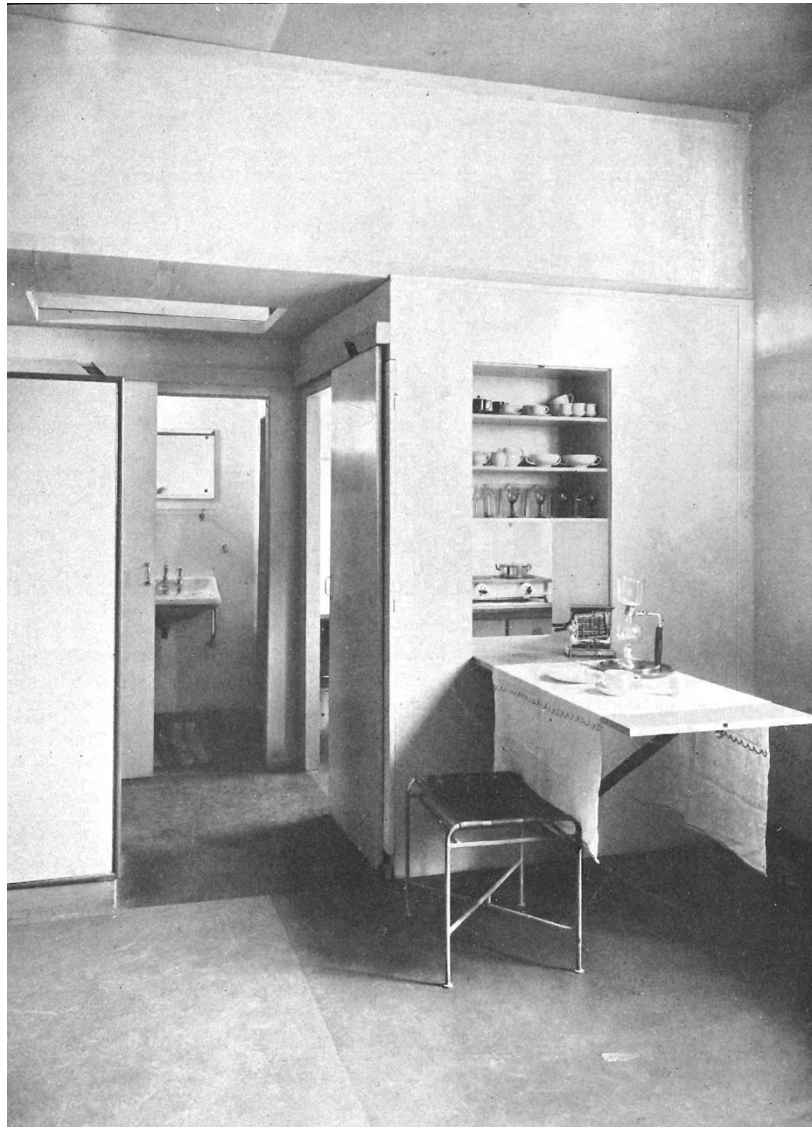


Figure 2: View of a Bachelor Room (Jungesellenzimmer), arch. Kienzle.  
Published in Siegfried Giedion, *'Befreites Wohnen'*, 1929

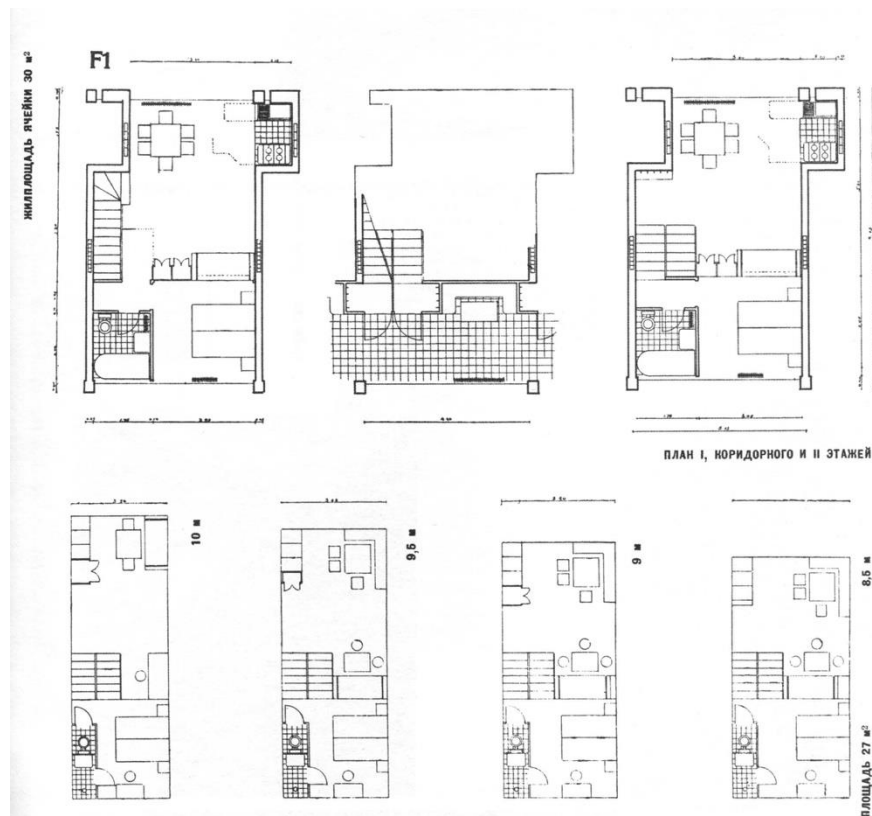


Figure 3: Strojkom's cell, Type F-1, precursors of The Narkomfin Building, SA, 1929

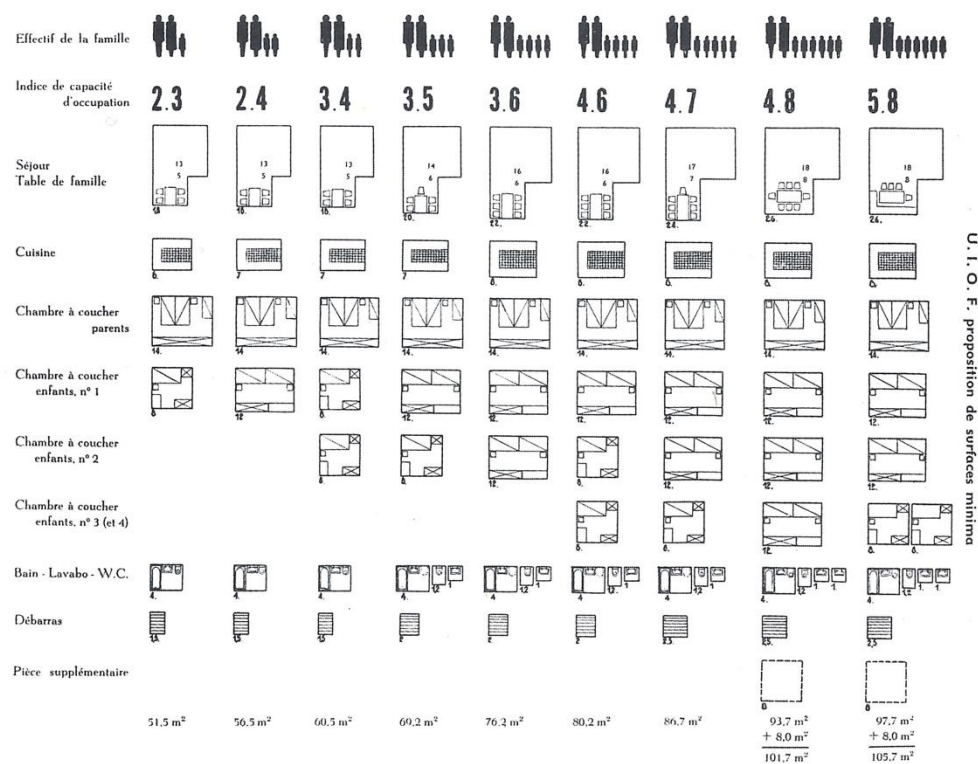


Figure 4: Diagram for the calculation of minimum surface norms for apartments in post-War France. First published in 1959, from 'Techniques et architecture' 19, n.2. Re-published in Leen Cuypers, 'The Social Project', 2014





Figure 5-6: Common space and interior of a living unit.  
Jystrup Savvaerket Cohousing, arch. Vandkunsten Architects, 1984

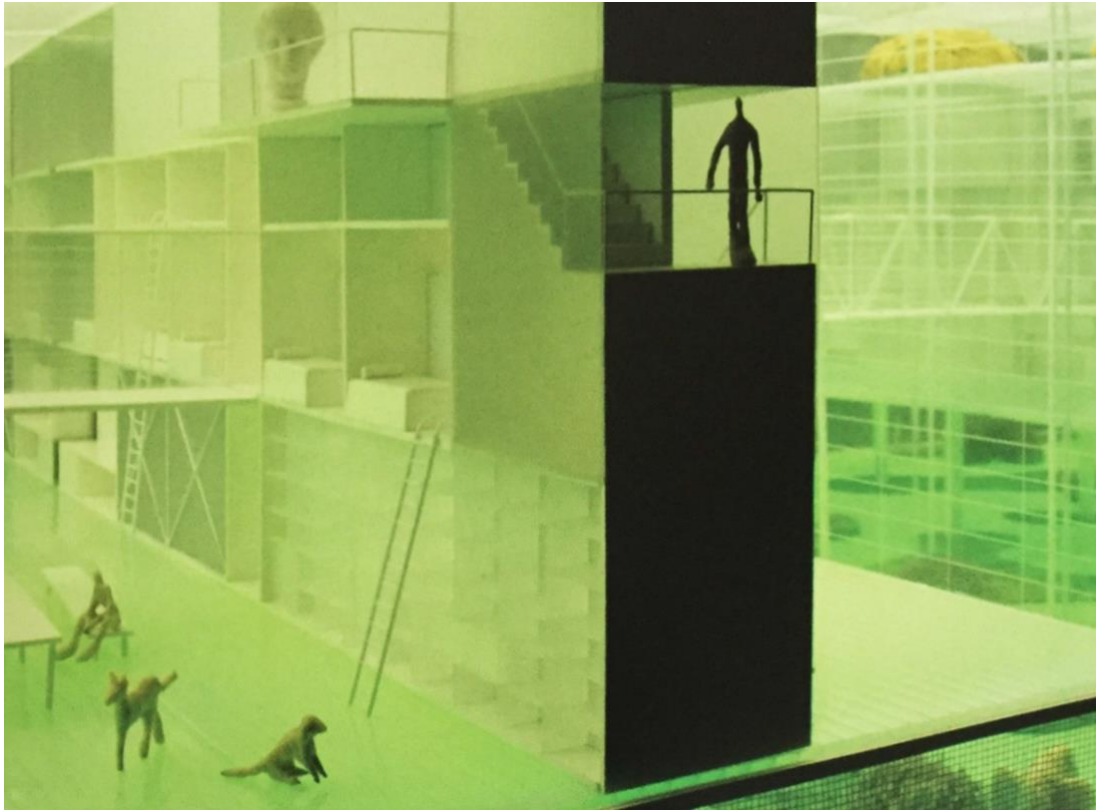


Figure 7: Andrea Branzi, Casa Madre, Cohousing Integrale, 2008



Figure 8: Parisian Micro-flat, Ghislain (student) in his fifth floor 107ft 2 apartment.