

Housing-Based Urban Planning ?

Sir Patrick Geddes' Modern Master Plan for Tel Aviv, 1925



Figure 1: Edinburgh Old Town Tenements and repairing, 1911. Source: Geddes Archive, University of Strathclyde.

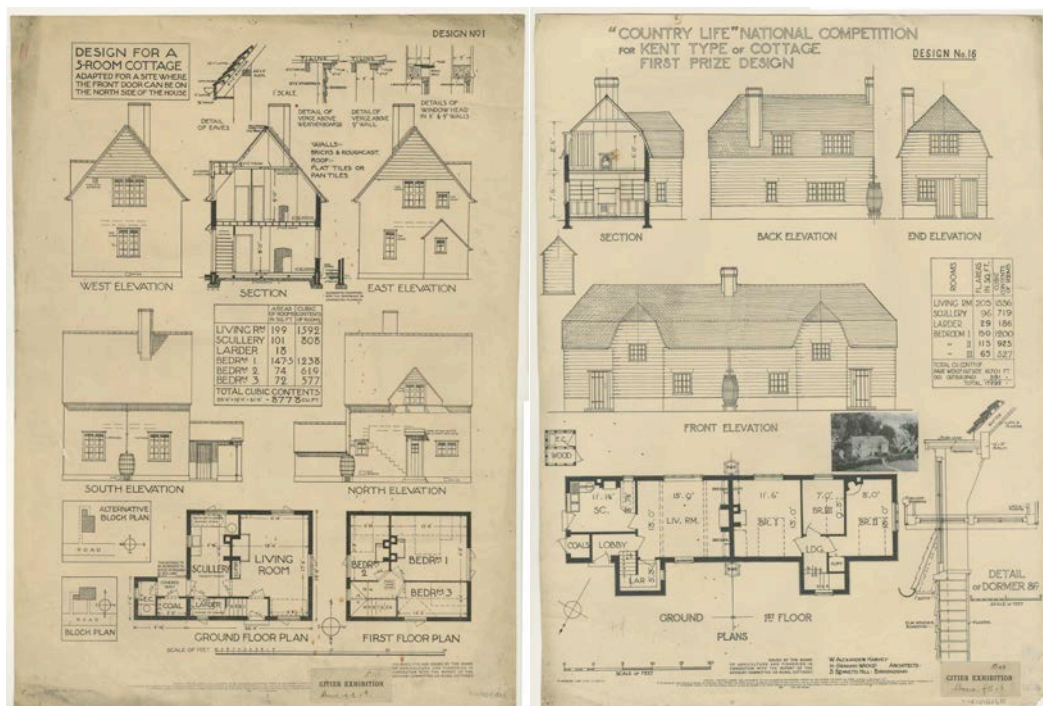


Figure 2: House type drawings. Source: Geddes Archive, University of Strathclyde.



Figure 3: Indore expanding worker housing proposal; Indore urban block explorations. Source: Geddes, 1918.



Figure 4: Tel Aviv shack neighborhoods, 1925. Source: National Photo Collection.



Figure 5: The Shapira Alley cottages versus nearby tenement. Source: Geddes Archive, University of Strathclyde.

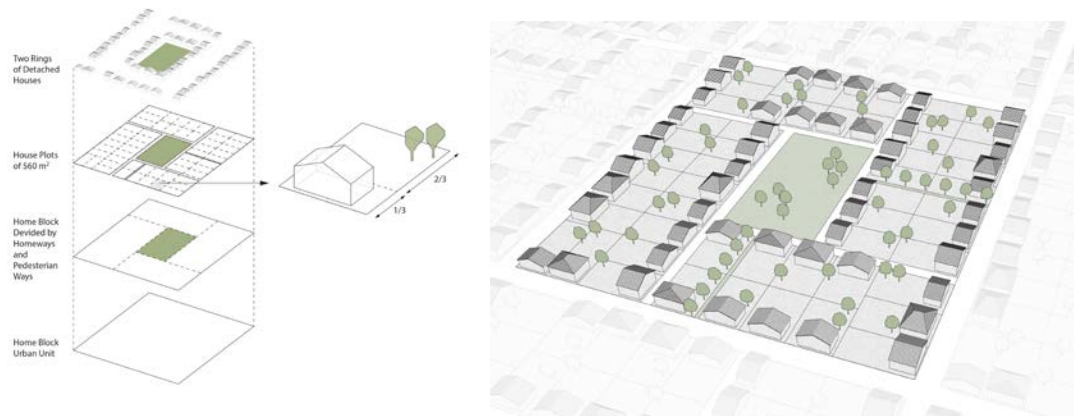


Figure 6: Geddes block scheme. Schemes by Author.

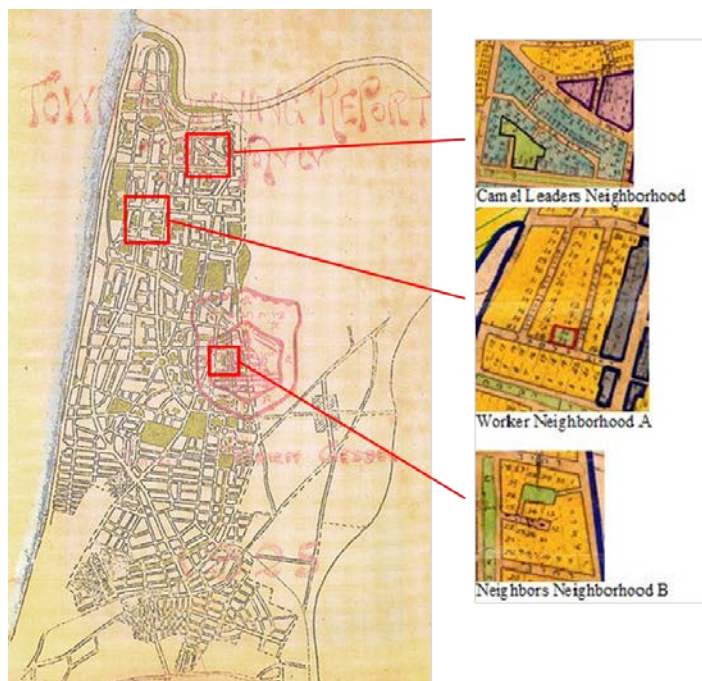


Figure 7: Tel Aviv Geddes plan, 1925. Source: Tel Aviv Municipal Archive.

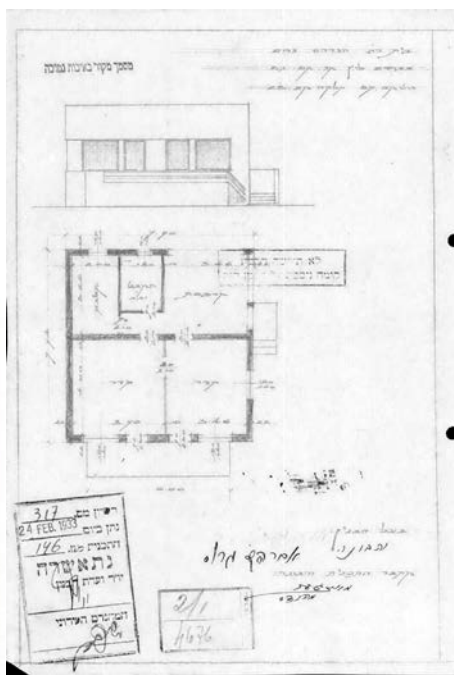


Figure 9: Worker Neighborhood A, 1935. Source: Aner, 1988. Building permit for Worker Neighborhood A, 1933. Source: Tel Aviv Technical Archive.

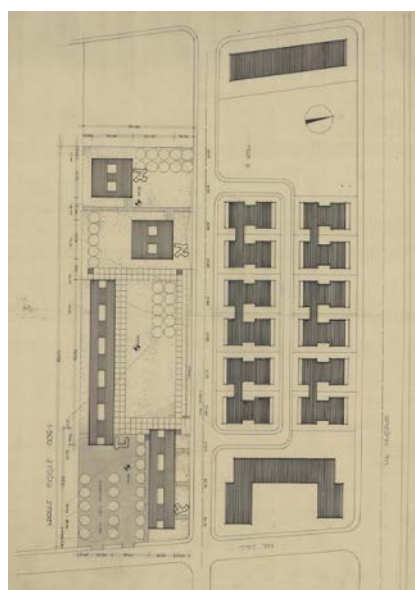


Figure 10 Be'eri estate. Plan source: Arie Sharon Archive at Azrieli Archive for Israeli Architecture. Scheme by Author.



Figure 11: Leapfrog development of the Geddes plan, 1932. Source: American Colony, Library of Congress.

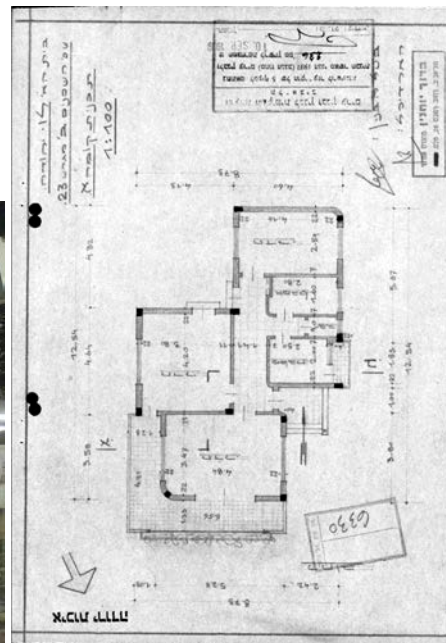


Figure 12: Neighbors' Neighborhood B. Latrice Alley 4 cottage, image by Author. House extension approval plan, 1939. Source: Tel Aviv Technical Archive.